

# M1, The Crab Nebula



Credit: Dieter Retzl / CCDGuide.com

- Supernova remnant in Taurus
- RA 05h 34.5m, dec. 22° 01'
- Mag. 8.4

## M2



Credit: Ron Brecher

- Globular cluster in Aquarius
- RA 21h 33.5m, dec.  $-00^{\circ} 49'$
- Mag. 6.5

# M3



Credit: Manfred Wasshuber / CCDGuide.com

- Globular cluster in Canes Venatici
- RA 13h 42.2m, dec. 28° 23'
- Mag. 6.2

# M4



Credit: CEDIC Team, Herbert Walter / CCDGuide.com

- Globular cluster in Scorpius
- RA 16h 23.6m, dec.  $-26^{\circ} 32'$
- Mag. 5.6

# M5



Credit: Manfred Wasshuber / CCD Guide.com

- Globular cluster in Serpens Caput
- RA 15h 18.6m, dec. 02° 05'
- Mag. 5.6

## M6, The Butterfly Cluster



Credit: Bernhard Hubl / CCDGuide.com

- Open cluster in Scorpius
- RA 17h 40.1m, dec.  $-32^{\circ} 13'$
- Mag. 5.3

## M7, Ptolemy's Cluster



©Luis Fernando Parmegiani

Credit: Luis Fernando Parmegiani.

- Open cluster in Scorpius
- RA 17h 53.9m, dec.  $-34^{\circ} 49'$
- Mag. 4.1

## M8, The Lagoon Nebula



Credit: Ronald Piacenti Junior.

- Diffuse nebula in Sagittarius
- RA 18h 03.8m, dec.  $-24^{\circ} 23'$
- Mag. 6.0



# M9



Credit: Michael Breite, Stefan Heutz, Bernhard Hubl, Wolfgang Ries / CCDGuide.com

- Globular cluster in Ophiuchus
- RA 17h 19.2m, dec.  $-18^{\circ} 31'$
- Mag. 7.7

# M10



Credit: Günter Kerschhuber / CCDGuide.com

- Globular cluster in Ophiuchus
- RA 16h 57.1m, dec.  $-04^{\circ} 06'$
- Mag. 6.6

## M11, The Wild Duck Cluster



Credit: Ron Brecher

- Open cluster in Scutum
- RA 18h 51.1m, dec.  $-06^{\circ} 16'$
- Mag. 6.3

# M12



Credit: Bernhard Hubl

- Globular cluster in Ophiuchus
- RA 16h 47.2m, dec.  $-01^{\circ} 57'$
- Mag. 6.7

## M13, The Hercules Globular Cluster



Credit: Alvaro Ibañez Perez.

- Globular cluster in Hercules
- RA 16h 41.7m, dec. 36° 28'
- Mag. 5.8

# M14



Credit: Michael Breite, Stefan Heutz, Wolfgang Ries / CCDGuide.com

- Globular cluster in Ophiuchus
- RA 17h 37.6m, dec.  $-03^{\circ} 15'$
- Mag. 7.6

# M15



Credit: Mark Griffith.

- Globular cluster in Pegasus
- RA 21h 30.0m; dec. 12° 10'
- Mag. 6.2

## M16, The Eagle Nebula



Credit: Mark Griffith

- Open cluster plus nebula in Serpens Cauda
- RA 18h 18.8m, dec.  $-13^{\circ} 47'$
- Mag. 6.4



## M17, The Omega Nebula



Credit: Tom Bishton

- Diffuse nebula in Sagittarius
- RA 18h 20.8m, dec.  $-16^{\circ} 11'$
- Mag. 7.0

# M18



Credit: Michael Breite, Stefan Heutz, Wolfgang Ries / CCDGuide.com

- Open cluster in Sagittarius
- RA 18h 19.9m, dec.  $-17^{\circ} 08'$
- Mag. 7.5

# M19



Credit: Michael Breite, Stefan Heutz, Wolfgang Ries / CCDGuide.com

- Globular cluster in Ophiuchus
- RA 17h 02.6m, dec.  $-26^{\circ} 16'$
- Mag. 6.8

## M20, The Trifid Nebula



Credit: Chris Platkiw

- Diffuse nebula in Sagittarius
- RA 18h 02.6m, dec.  $-23^{\circ} 02'$
- Mag. 9.0

# M21



Credit: Michael Breite, Stefan Heutz, Wolfgang Ries / CCDGuide.com

- Open cluster in Sagittarius
- RA 18h 04.6m, dec.  $-22^{\circ} 30'$
- Mag. 6.5

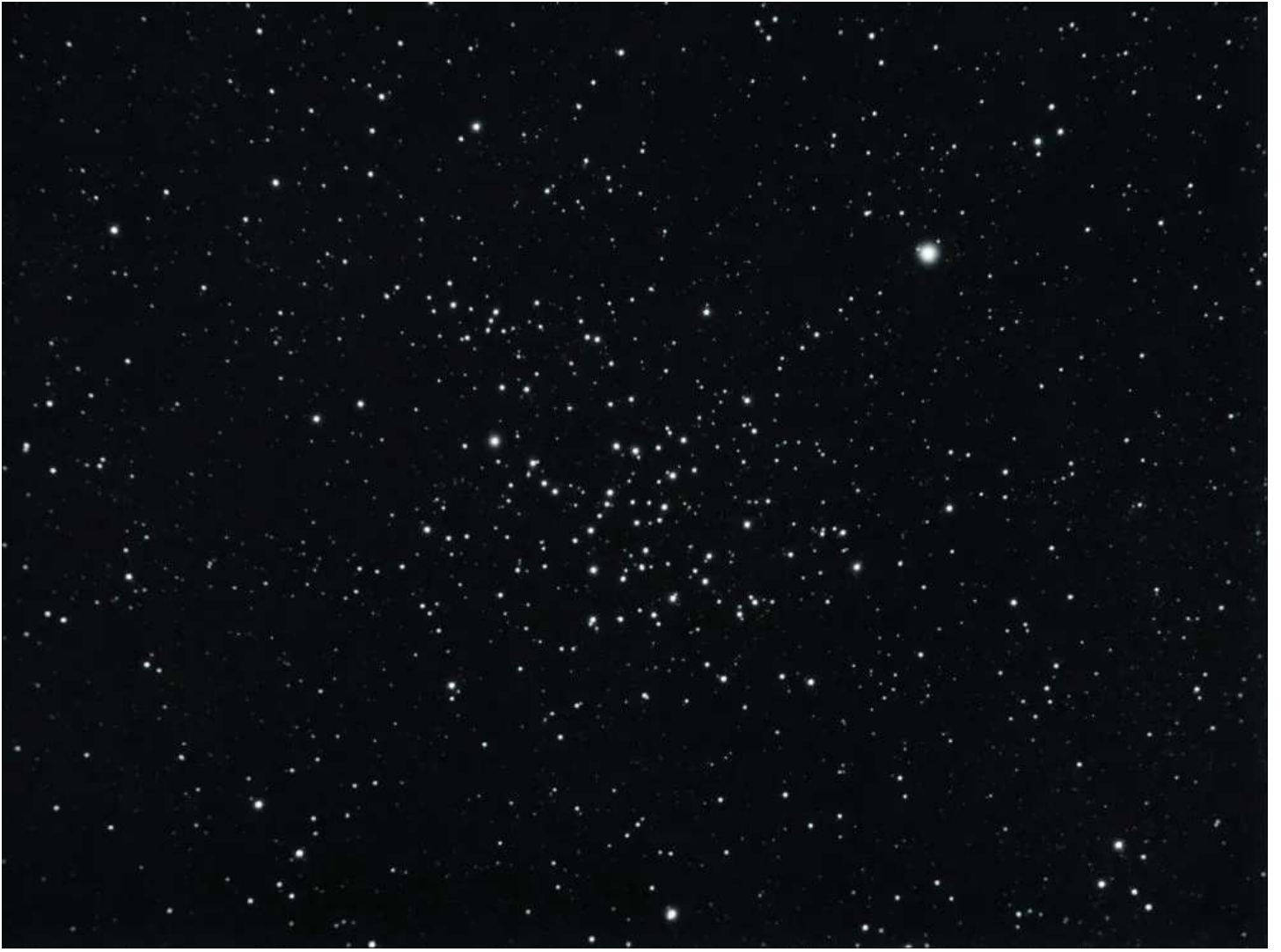
# M22



M22 - Globular Cluster by Ronald Piacenti Jr

- Globular cluster in Sagittarius
- RA 18h 36.4m, dec.  $-23^{\circ} 54'$
- Mag. 5.1

## M23



Credit: Bachleitner Hannes

- Open cluster in Sagittarius
- RA 17h 56.8m, dec.  $-19^{\circ} 01'$
- Mag. 6.9

## M24, The Sagittarius Star Cloud



Credit: Christian vd Berge

- Milky Way patch in Sagittarius
- RA 18h 16.9m, dec.  $-18^{\circ} 29'$
- Mag. 4.6



# M25



Credit: Michael Breite, Stefan Heutz, Wolfgang Ries / CCDGuide.com

- Open cluster in Sagittarius
- RA 18h 31.6m, dec.  $-19^{\circ} 15'$
- Mag. 6.5

## M26



Credit: Michael Breite, Stefan Heutz, Wolfgang Ries / CCDGuide.com

- Open cluster in Scutum
- RA 18h 45.2m, dec.  $-09^{\circ} 24'$
- Mag. 8.0

## M27, The Dumbbell Nebula



Credit: Jaroslav Vlcek

- Planetary nebula (<https://www.skyatnightmagazine.com/space-science/planetary-nebula/>) in Vulpecula
- RA 19h 59.6m, dec. 22° 43'
- Mag. 7.4

## M28



Credit: Michael Breite, Stefan Heutz, Wolfgang Ries / CCDGuide.com

- Globular cluster in Sagittarius
- RA 18h 24.5m, dec.  $-24^{\circ} 52'$
- Mag. 6.8

## M29



Credit: Bill McSorley

- Open cluster in Cygnus
- RA 20h 23.9m, dec. 38° 32'
- Mag. 7.1

# M30



Credit: Daniel Verschafte.

- Globular cluster in Capricornus
- RA 21h 40.4m, dec.  $-23^{\circ} 11'$
- Mag. 7.2

# M31, The Andromeda Galaxy



Credit: Mariusz Szymaszek.

- Spiral galaxy in Andromeda
- RA 00h 42.7m, dec. 41° 16'
- Mag. 3.4

## M32



Credit: Michael Breite, Stefan Heutz, Wolfgang Ries / CCDGuide.com

- Elliptical galaxy in Andromeda
- RA 00h 42.7m, dec. 40° 52'
- Mag. 8.1



## M33, The Triangulum Galaxy



Credit: David Slack.

- Spiral galaxy in Triangulum
- RA 01h 33.9m, dec. 30° 39'
- Mag. 5.7

# M34



M34 by Jaspal Chadha

- Open cluster in Perseus
- RA 02h 42.0m, dec. 42° 47'
- Mag. 5.5

# M35



Credit: Manfred Wasshuber.

- Open cluster in Gemini
- RA 06h 08.9m, dec. 24° 20'
- Mag. 5.3

## M36



Credit: Ron Larter

- Open cluster in Auriga
- RA 05h 36.1m, dec. 34° 08'
- Mag. 6.3

# M37



Credit: Housseem Ksontini

- Open cluster in Auriga
- RA 05h 52.4m, dec. 32° 33'
- Mag. 6.2

# M38



Credit: Bradley Swift

- Open cluster in Auriga
- RA 05h 28.4m, dec. 35° 50'
- Mag. 7.4

# M39



Credit: Tom Howard

- Open cluster in Cygnus
- RA 21h 32.2m, dec. 48° 26'
- Mag. 4.6

# M40



Credit: Harald Strauß / CCDGuide.com

- Binary star in Ursa Major
- RA 12h 22.4m, dec. 58° 05'
- Mag. 8.4



# M41



Credit: Harald Strauß / CCDGuide.com

Open cluster in Canis Major

RA 06h 46.0m, dec.  $-20^{\circ} 44'$

Mag. 4.6

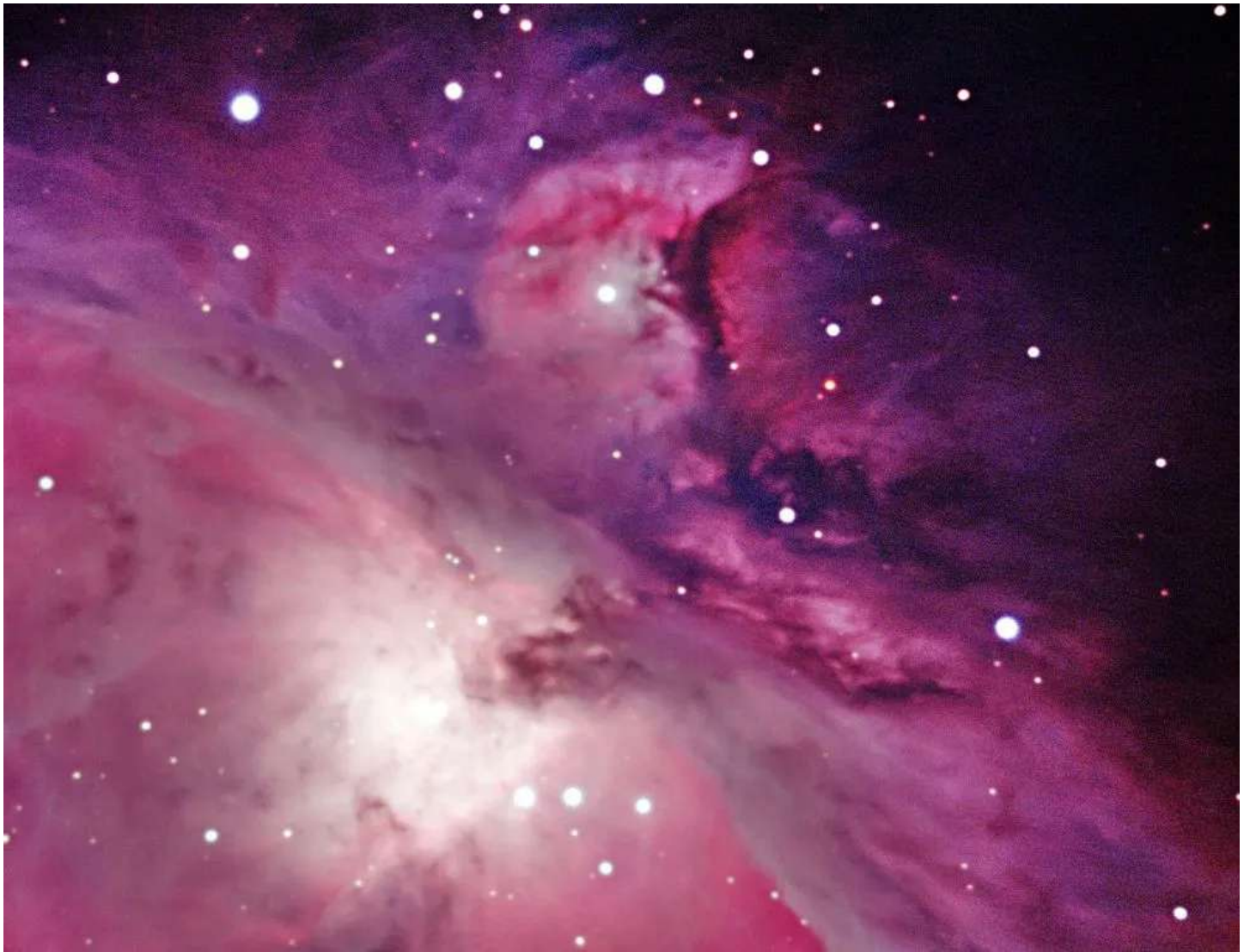
## M42, The Orion Nebula



Credit: Tom Harbin

Diffuse nebula in Orion | RA 05h 35.4m, dec.  $-05^{\circ} 27'$  | Mag. 4.0

## M43, De Mairan's Nebula



Credit: Mark Griffith

Emission nebula in Orion

RA 05h 35.6m, dec.  $-05^{\circ} 16'$  | Mag. 9.0

# M44, The Beehive Cluster



Credit: Bill McSorely

Open cluster in Cancer

RA 08h 40.1m, dec. 19° 59' | Mag. 3.7

## M45, The Pleiades



Credit: Raoul van Eijndhoven

- Open cluster in Taurus
- RA 03h 47.0m, dec. 24° 07'
- Mag. 1.6

# M46



Credit: Kfir Simon

- Open cluster in Puppis
- RA 07h 41.8m, dec.  $-14^{\circ} 49'$
- Mag. 6.0

# M47



Credit: Dan Crowson

- Open cluster in Puppis
- RA 07h 36.6m, dec.  $-14^{\circ} 30'$
- Mag. 5.2

# M48

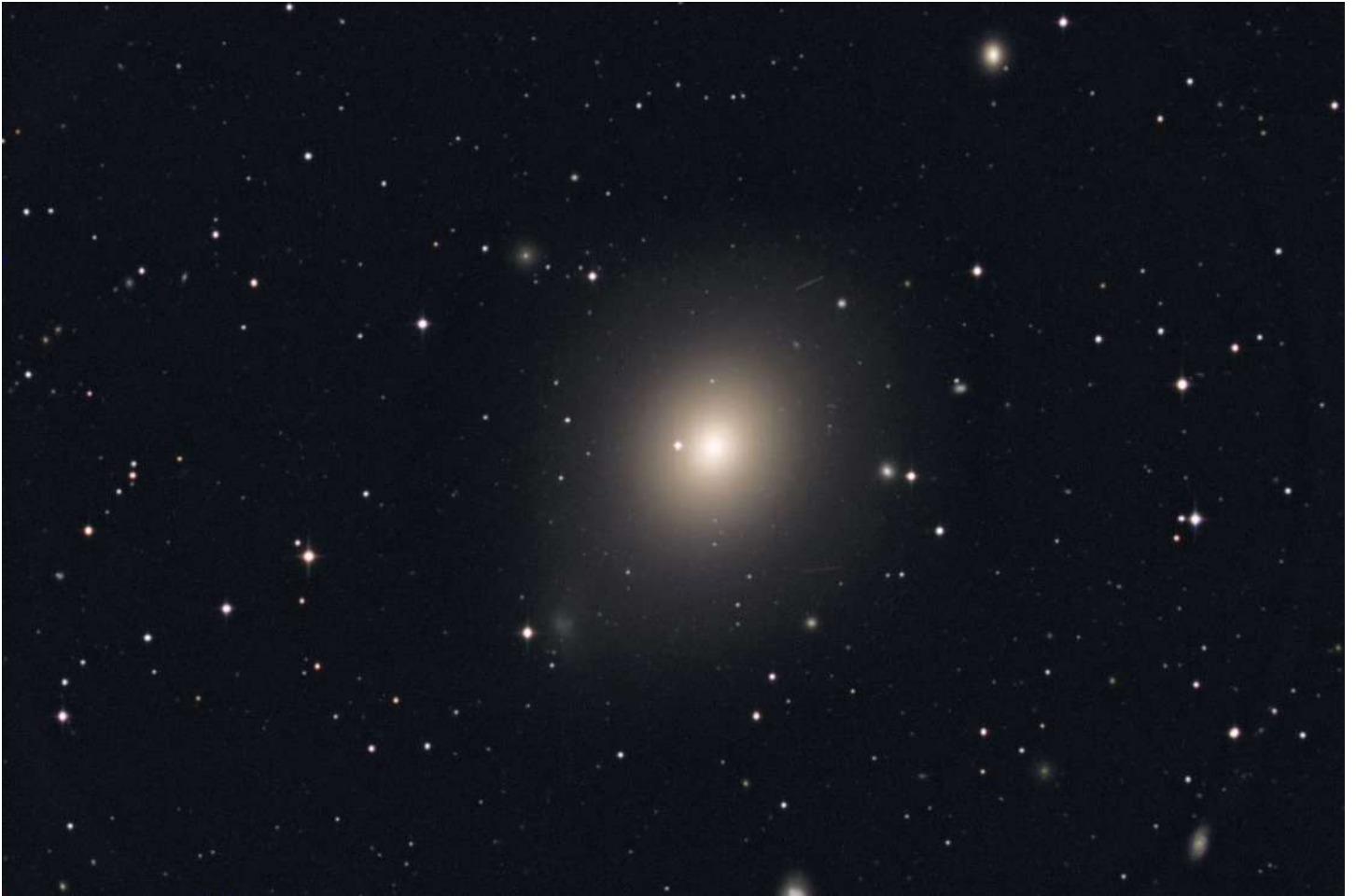


Credit: Michael Breite, Stefan Heutz, Wolfgang Ries.

- Open cluster in Hydra
- RA 08h 13.8m, dec.  $-05^{\circ} 48'$
- Mag. 5.5



# M49



Credit: Michael Breite, Stefan Heutz, Wolfgang Ries.

- Elliptical galaxy in Virgo
- RA 12h 29.8m, dec. 08° 00'
- Mag. 8.4

# M50



Credit: Michael Breite, Stefan Heutz, Wolfgang Ries.

- Open cluster in Monoceros
- RA 07h 03.2m, dec.  $-08^{\circ} 20'$
- Mag. 6.3

## M51, The Whirlpool Galaxy



Credit: Duan Yusef

- Spiral galaxy in Canes Venatici
- RA 13h 29.9m, dec. 47° 12'
- Mag. 8.4

# M52



Credit: Harald Strauß / CCDGuide.com

Open cluster in Cassiopeia

RA 23h 24.2m, dec. 61° 35' | Mag. 7.3

# M53



Credit: Mark Griffith

- Globular cluster in Coma Berenices
- RA 13h 12.9m, dec. 18° 10'
- Mag. 7.6

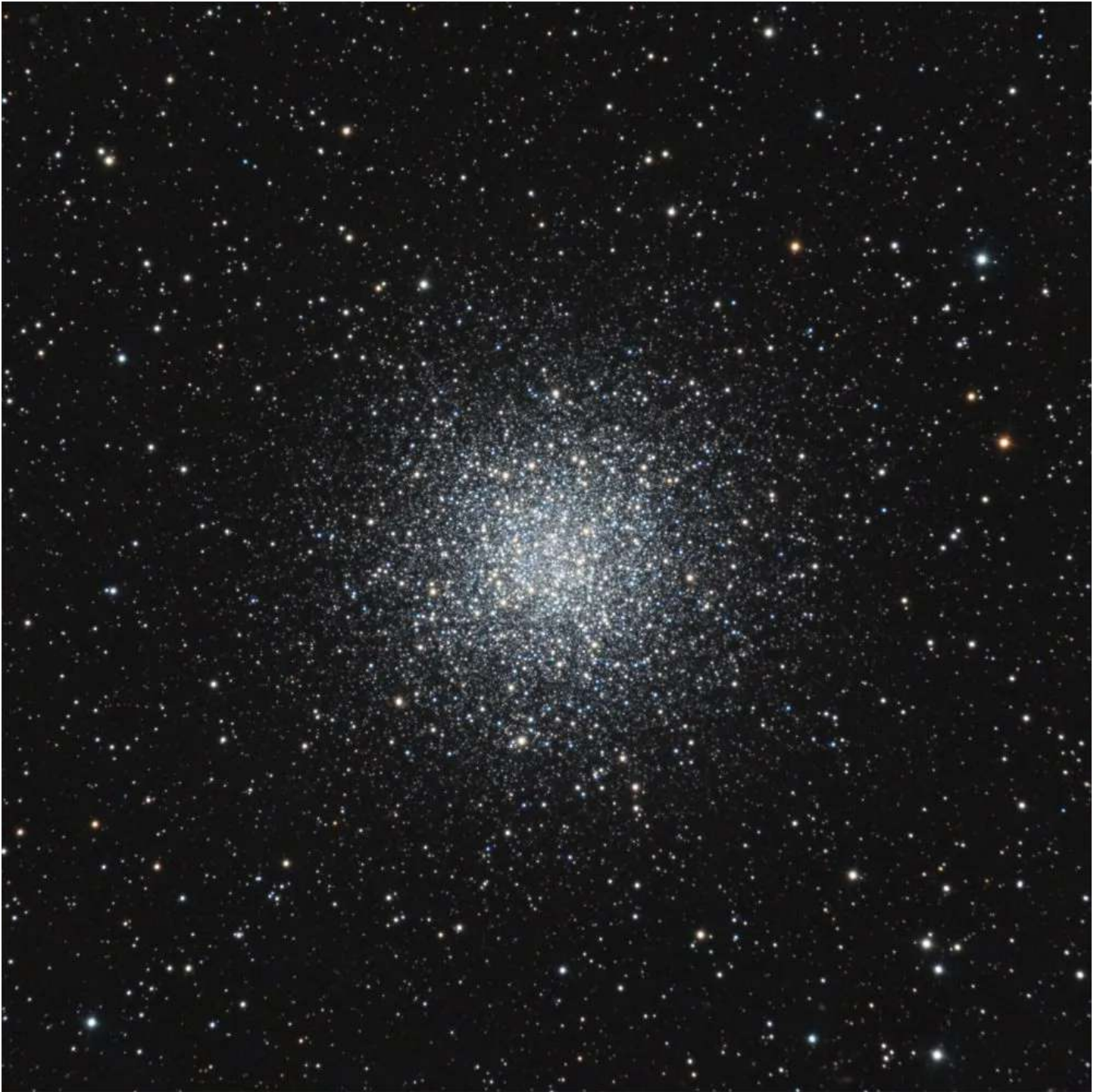
# M54



Credit: ESA/Hubble & NASA

- Globular cluster in Sagittarius
- RA 18h 55.1m, dec.  $-30^{\circ} 29'$
- Mag. 7.6

# M55



Credit: Bernhard Hubl / CCDGuide.com

- Globular cluster in Sagittarius
- RA 19h 40.0m, dec.  $-30^{\circ} 58'$
- Mag. 6.3

## M56

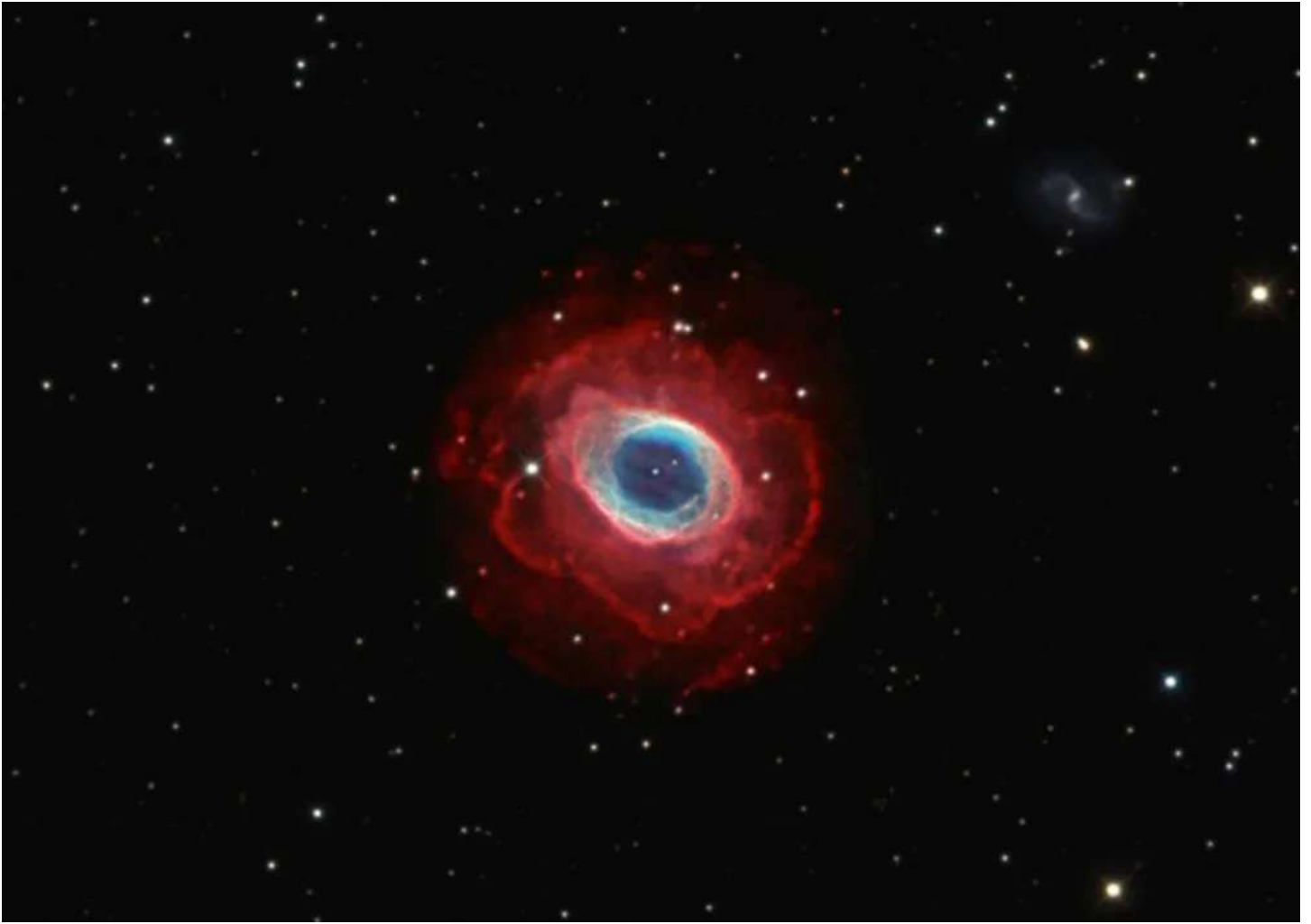


Credit: Ron Brecher

- Globular cluster in Lyra
- RA 19h 16.6m, dec. 30° 11'
- Mag. 8.3



## M57, The Ring Nebula



Credit: André van der Hoeven

- Planetary nebula in Lyra
- RA 18h 53.6m, dec. 33° 02'
- Mag. 8.8

# M58



Credit: Harald Strauß / CCDGuide.com

- Spiral galaxy in Virgo
- RA 12h 37.7m, dec. 11° 49'
- Mag 9.7

# M59



Credit: Michael Breite, Stefan Heutz, Wolfgang Ries / CCDGuide.com

- Elliptical galaxy in Virgo
- RA 12h 42.0m, dec. 11° 39'
- Mag. 9.6

# M60



Credit: Harald Strauß / CCDGuide.com

- Elliptical galaxy in Virgo
- RA 12h 43.7m, dec. 11° 33'
- Mag. 8.8

# M61



Credit: Michael Breite, Stefan Heutz, Wolfgang Ries / CCDGuide.com

- Spiral galaxy in Virgo
- RA 12h 21.9m, dec. 04° 28'
- Mag. 9.7

# M62



Credit: Michael Breite, Stefan Heutz, Wolfgang Ries / CCDGuide.com

- Globular cluster in Ophiuchus
- RA 17h 01.2m, dec.  $-30^{\circ} 07'$
- Mag. 6.5

## M63, The Sunflower Galaxy



Credit: Dan Crowson

- Spiral galaxy in Canes Venatici
- RA 13h 15.8m, dec. 42° 02'
- Mag. 8.6

## M64, The Blackeye Galaxy



Credit: Klauser Franz / CCDGuide.com

- Spiral galaxy in Coma Berenices
- RA 12h 56.7m, dec. 21° 41'
- Mag. 8.5



## M65



Credit: Klauser Franz / CCDGuide.com

- Spiral galaxy in Leo
- RA 11h 18.9m, dec. 13° 05'
- Mag. 9.3

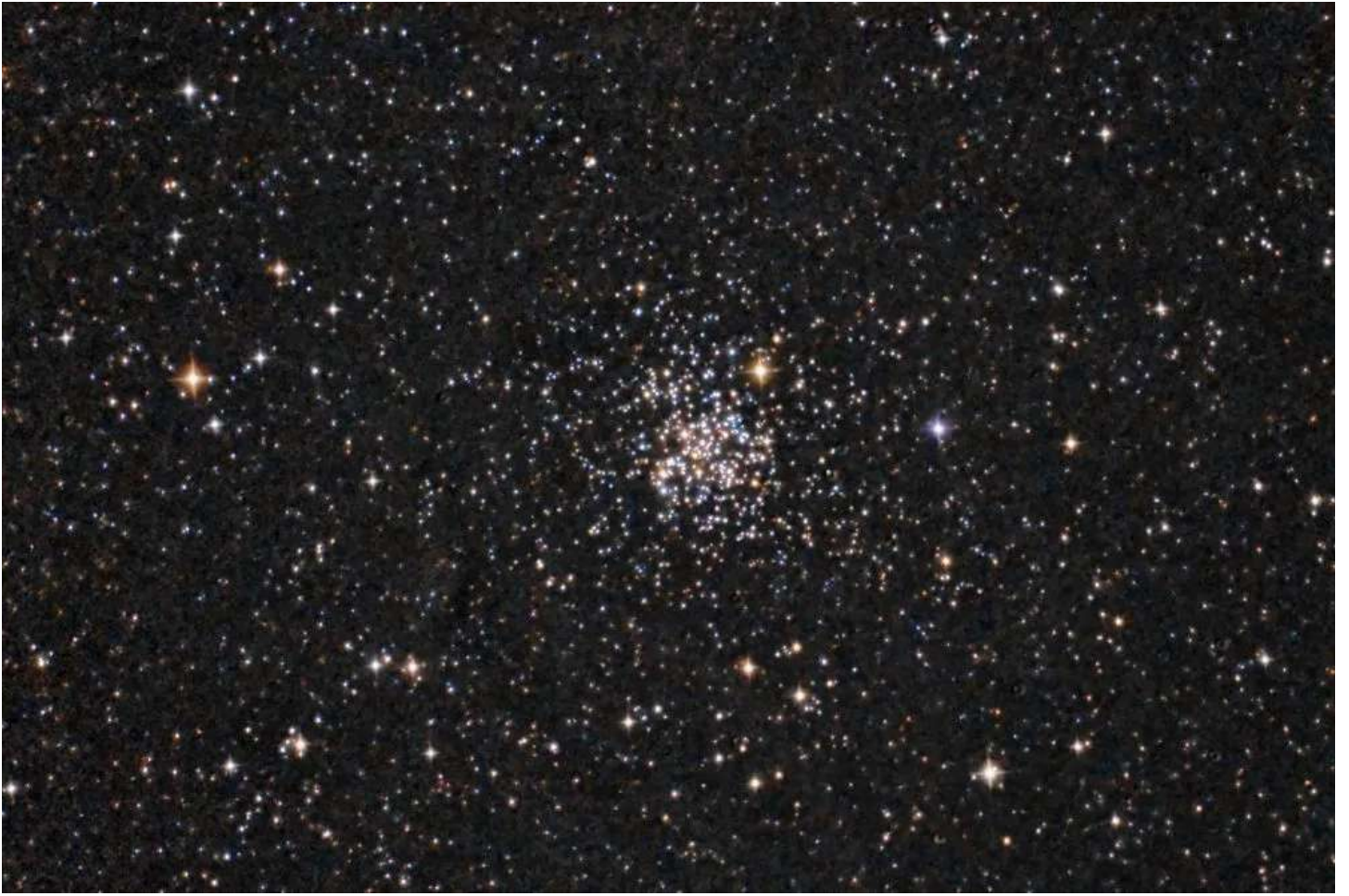
## M66



Credit: Manfred Wasshuber / CCDGuide.com

- Spiral galaxy in Leo
- RA 11h 20.2m, dec. 12° 59'
- Mag. 8.9

# M67



Credit: Bill McSorely

- Open cluster in Cancer
- RA 08h 50.4m, dec. 11° 49'
- Mag. 6.1

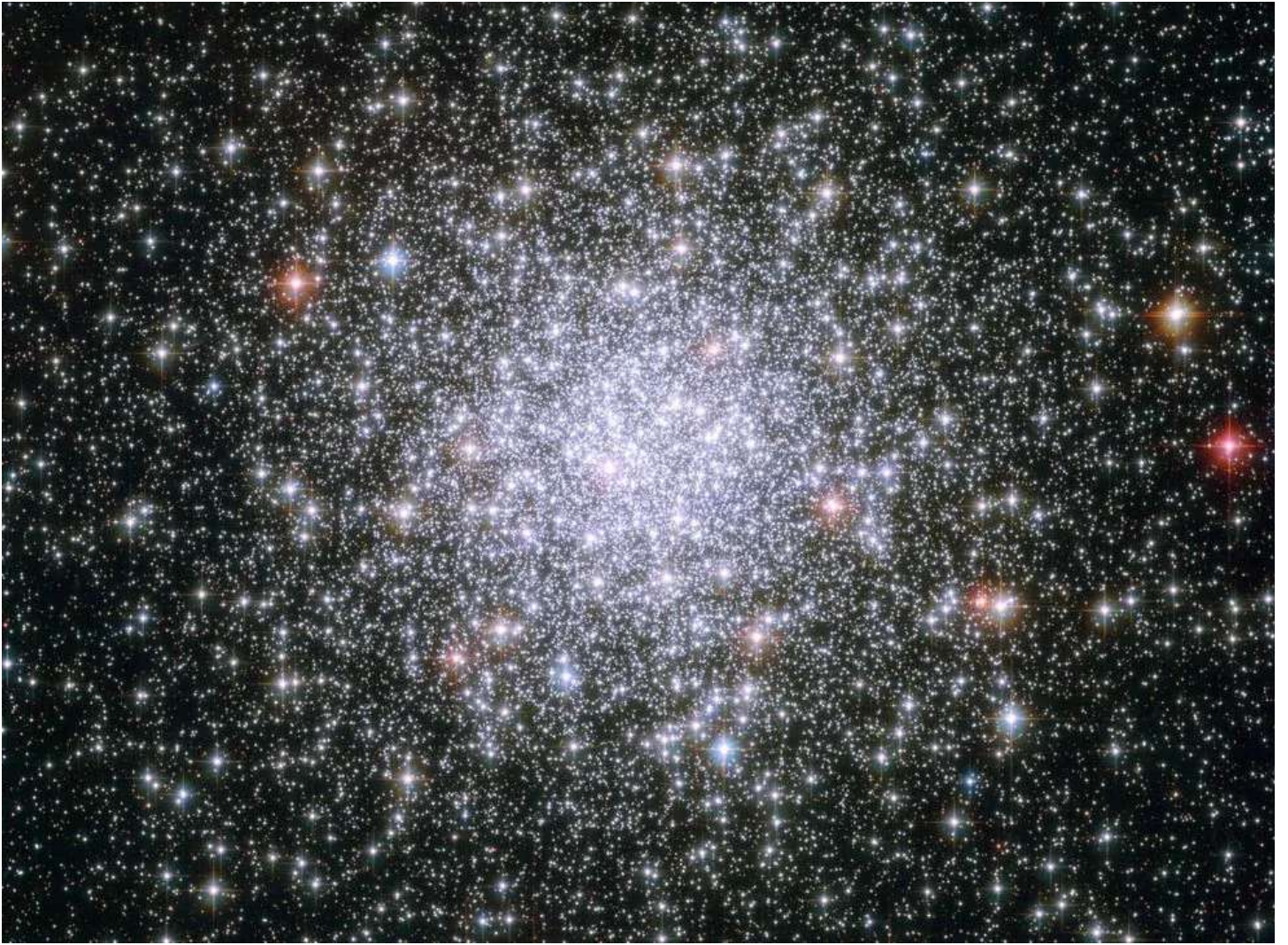
# M68



Credit: Michael Breite, Stefan Heutz, Wolfgang Ries / CCDGuide.com

- Globular cluster in Hydra
- RA 12h 39.5m, dec.  $-26^{\circ} 45'$
- Mag. 7.8

# M69



Credit: ESA/Hubble & NASA

- Globular cluster in Sagittarius
- RA 18h 31.4m, dec.  $-32^{\circ} 21'$
- Mag. 7.6

# M70



Credit: ESA/Hubble & NASA

- Globular cluster in Sagittarius
- RA 18h 43.2m, dec.  $-32^{\circ} 18'$
- Mag. 7.9

# M71



Credit: Bill McSorley.

- Globular cluster in Sagitta
- RA 19h 53.8m, dec. 18° 47'
- Mag. 8.2

## M72



Credit: Ron Brecher.

- Globular cluster in Aquarius
- RA 20h 53.5m, dec.  $-12^{\circ} 32'$
- Mag. 9.3



# M73



Credit: Michael Breite, Stefan Heutz, Wolfgang Ries / CCDGuide.com

- Asterism in Aquarius
- RA 20:58.9, dec. -12:38
- Mag 9.0

# M74



Credit: Franz Klauser / CCDGuide.com

- Spiral galaxy in Pisces
- RA 01h 36.7m, dec. 15° 47'
- Mag. 9.4

## M75



Credit: Michael Breite, Stefan Heutz, Wolfgang Ries / CCDGuide.com

- Globular cluster in Sagittarius
- RA 20h 06.1m, dec.  $-21^{\circ} 55'$
- Mag. 8.5

## M76, The Little Dumbbell Nebula



Credit: Martin Bailey

- Planetary nebula in Perseus
- RA 01h 42.4m, dec. 51° 34'
- Mag. 10.1

## M77



Credit: Günter Kerschhuber / CCDGuide.com

- Spiral galaxy in Cetus
- RA 02h 42.7m, dec.  $-00^{\circ} 01'$
- Mag. 8.9

# M78



Credit: Alvaro Ibañez Perez.

- Diffuse nebula in Orion
- RA 05h 46.7m, dec. 00° 03'
- Mag. 8.3

# M79



Credit: Harald Strauß

Globular cluster in Lepus

RA 05h 24.5m, dec.  $-24^{\circ} 33'$  | Mag. 7.7

# M80



Credit: Daniel Verschatse / CCDGuide.com

Globular cluster in Scorpius

RA 16h 17.0m, dec.  $-22^{\circ} 59'$  | Mag. 7.3



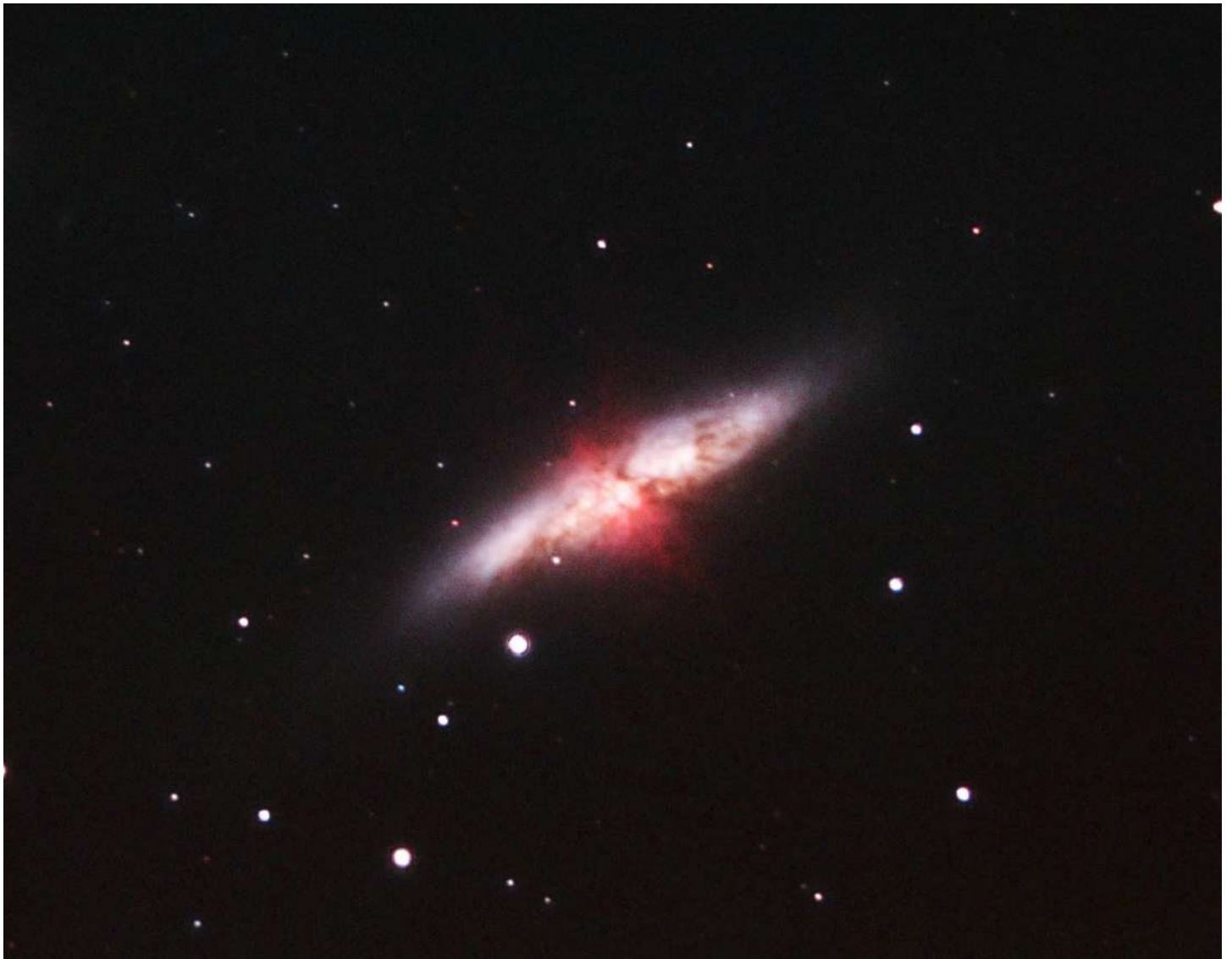
## M81, Bode's Galaxy



Credit: Frederic Vandewattyne.

- Spiral galaxy in Ursa Major
- RA 09h 55.6m, dec. 69° 04'
- Mag. 6.9

## M82, The Cigar Galaxy



Credit: Mark Griffith.

- Irregular galaxy in Ursa Major
- RA 09h 55.8m, dec. 69° 41'
- Mag. 8.4

## M83, The Southern Pinwheel Galaxy



Credit: Rafael Compassi

- Spiral galaxy in Hydra
- RA 13h 37.0m, dec.  $-29^{\circ} 52'$
- Mag. 7.6

# M84



Credit: ESA/Hubble & NASA

- Lenticular galaxy in Virgo
- RA 12h 25.1m, dec.  $-12^{\circ} 53'$
- Mag. 9.1

# M85



Credit: Michael Breite, Stefan Heutz, Wolfgang Ries/ CCDGuide.com

- Lenticular galaxy in Coma Berenices
- RA 12h 25.4m, dec. 18° 11'
- Mag. 9.1

# M86



Credit: Michael Breite, Stefan Heutz, Wolfgang Ries / CCDGuide.com

- Lenticular galaxy in Virgo
- RA 12h 26.2m, dec. 12° 57'
- Mag. 8.9

## M87, Virgo A



Credit: Bernhard Hubl

- Elliptical galaxy in Virgo
- RA 12h 30.8m, dec. 12° 24'
- Mag. 8.6

## M88



Credit: John Tonks.

- Spiral galaxy in Coma Berenices
- RA 12h 32.0m, dec. 14° 25'
- Mag. 9.6



# M89



Credit: Michael Breite, Stefan Heutz, Wolfgang Ries / CCDGuide.com

- Elliptical galaxy in Virgo
- RA 12h 35.7m, dec. 12° 33'
- Mag. 9.8

## M90



Credit: Michael Breite, Stefan Heutz, Wolfgang Ries / CCDGuide.com

- Spiral galaxy in Virgo
- RA 12h 36.8m, dec. 13° 10'
- Mag. 9.5

# M91



Credit: Michael Breite, Stefan Heutz, Wolfgang Ries / CCDGuide.com

- Spiral galaxy in Coma Berenices
- RA 12h 35.4m, dec. 14° 30'
- Mag. 10.2

## M92



Credit: Michael Karrer / CCDGuide.com

- Globular cluster in Hercules
- RA 17h 17.1m, dec. 43° 08'
- Mag. 6.4

# M93



Credit: Dan Crowson

- Open cluster in Puppis
- RA 07:44.6, dec. -23:52
- Mag. 6.0

# M94



Credit: Mark Griffith

- Spiral galaxy in Canes Venatici
- RA 12h 50.9m, dec. 41° 07'
- Mag. 8.2

# M95



Credit: Michael Breite, Stefan Heutz, Wolfgang Ries / CCDGuide.com

- Spiral galaxy in Leo
- RA 10h 44.0m, dec. 11° 42'
- Mag. 9.7

## M96



Credit: Michael Breite, Stefan Heutz, Wolfgang Ries / CCDGuide.com

- Spiral galaxy in Leo
- RA 10h 46.8m, dec. 11° 49'
- Mag. 9.2



## M97, The Owl Nebula



Credit: Mark Griffith

- Planetary nebula in Ursa Major
- RA 11h 14.8m, dec. 55° 01'
- Mag. 9.9

## M98



Credit: Harald Strauß / CCDGuide.com

- Spiral galaxy in Coma Berenices
- RA 12h 13.8m, dec. 14° 54'
- Mag. 10.1

# M99



Credit: Dan Crowson

- Spiral galaxy in Coma Berenices
- RA 12h 18.8m, dec. 14° 25'
- Mag. 9.9

# M100



Credit: Dan Crowson

- Spiral galaxy in Coma Berenices
- RA 12h 22.9m, dec. 15° 49'
- Mag. 9.3

## M101, The Pinwheel Galaxy



Credit: Keith Bramley

- Spiral galaxy in Ursa Major
- RA 14h 03.2m, dec. 54° 21'
- Mag. 7.9

## M102 (NGC 5866)



Credit: Michael Breite, Stefan Heutz, Wolfgang Ries / CCD Guide.com

- Lenticular galaxy in Draco
- RA 15h 06.5m, dec. 55° 46'
- Mag. 9.9

# M103



M103 - Open Cluster in Cassiopeia by Bill McSorley

- Open cluster in Cassiopeia
- RA 01h 33.2m, dec. 60° 42'
- Mag 7.4

## M104, The Sombrero Galaxy



Credit: Dan Crowson

- Spiral galaxy in Virgo
- RA 12h 40.0m, dec.  $-11^{\circ} 37'$
- Mag. 8.0



# M105



Credit: Manfred Wasshuber / CCDGuide.com

- Elliptical galaxy in Leo
- RA 10h 47.8m, dec. 12° 35'
- Mag. 9.3

# M106



M106 Spiral Galaxy by Mark Griffith

- Spiral galaxy in Canes Venatici
- RA 12h 19.0m, dec. 47° 18'
- Mag. 8.4

# M107



Credit: Michael Breite, Stefan Heutz, Wolfgang Ries / CCD Guide.com

- Globular cluster in Ophiuchus
- RA 16h 32.5m, dec.  $-13^{\circ} 03'$
- Mag. 7.9

# M108



Credit: Michael Breite, Stefan Heutz, Wolfgang Ries / CCD Guide.com

- Spiral galaxy in Ursa Major
- RA 11h 11.5m, dec. 55° 40'
- Mag. 10.0

# M109



Credit: Mark Griffith

- Spiral galaxy in Ursa Major
- RA 11h 57.6m, dec. 53° 23'
- Mag. 9.8

# M110



Credit: Dan Crowson

- Elliptical galaxy in Andromeda
- RA 00h 40.4m, dec. 41° 41'
- Mag. 8.5